



## WELCOME TO THE HAYDEN

We're so glad you've chosen to stay with us in one of our individually designed guest bedrooms.  
You're staying above our beautiful gastropub serving delicious food and our favourite  
ales and beers in the heart of Notting Hill.

## GUEST INFORMATION

Dear guest,

We welcome you to The Hayden Pub & Rooms and wish you a comfortable stay with us. Please do not hesitate to contact our bar in the pub downstairs if you require any assistance or have any queries during your stay, we will be happy to help.

Please press the **Office/Bar** button on your telephone.

## LUGGAGE

There is luggage storage available if you arrive prior to check in times & your room is not ready yet. Please check in with us and we will keep your bags until your bedroom is available.

Perhaps you are checking out of the rooms & you still have things to do. If so, we will keep your luggage for you even after you have checked out.

## LOCATION

The Hayden is located at 65 Westbourne Grove just a few minutes walk from Bayswater station (Circle & District lines); an 8 minute walk to Royal Oak station (Hammersmith & City, Circle and Metropolitan line) and less than a 20 minute walk to Paddington station (Hammersmith & City, Bakerloo, District & Circle lines, as well as National Rail services)



65 Westbourne Grove, Bayswater, London, W2 4UJ

## LOCAL ATTRACTIONS

Notting Hill is an affluent district in the Royal Borough of Kensington and Chelsea. Notting Hill is known for being a cosmopolitan and multicultural neighbourhood, hosting the annual Notting Hill Carnival and weekly Portobello Road Market. Since 1870, Notting Hill has had an association with artists. For much of the 20th century, the large houses were subdivided into multi-occupancy rentals. After decades of gentrification, Notting Hill has a reputation as an affluent and fashionable area, known for attractive terraces of large Victorian townhouses, high-end shopping destinations and restaurants

### **Diana Princess of Wales Memorial Playground**

This seven-mile walkway in memory of Diana, Princess of Wales winds its way through four of London's Royal parks, linking the palaces and mansions associated with her life.

**Next to her Kensington Palace home, London W2 3XA**

### **Electric Cinema**

At the Electric cinema you can watch all the latest releases in a super comfortable chair, sofa or two person lounge. For a luxury cinema experience, have drinks and food brought straight to your seats!

**191 Portobello Road, London W11 2ED**

### **Museum of Brands**

Just around the corner from the world-famous Portobello Road Market stands a unique Aladdin's cave of retro design and memories - the only museum of its kind in the whole world. Imagine walking through a corridor full from floor to ceiling with the treats that the British have filled their shopping baskets with for the last 200 years. Every corner you turn in the Time Tunnel leads you into a different decade. Whether you visit to awaken childhood memories or to inspire your own designs, we welcome you to the Museum of Brands.

**111-117 Lancaster Road, Notting Hill, London W11 1QT**

## SHOPPING

### **Westfield Shopping Centre**

Westfield London is a shopping centre in White City, London, UK, in the London Borough of Hammersmith and Fulham. It opened on 30 October 2008 and became the largest covered shopping development in the capital and after further investment and expansion, it became the largest shopping centre in Europe.

**Ariel Way Shepherd's Bush, London W12 7GF**

### **Portobello Markets**

Portobello Road Market is best known for its antiques, with hundreds of dealers selling jewellery, books and collectables dating from the 1600s to the 1960s. Like many London markets it began life as a place to buy fruit and veg, something you can still do six days a week (the whole market is closed on Sundays). Under the Westway and along the walkway to Ladbroke Grove, second-hand clothes sit next to the wares of up-and-coming fashion designers. Fridays are a little less hectic here, and you'll be able to explore fashion-focused Portobello Green Market, which comprises more than 800 stalls.

## ACTIVITIES

### **See Notting Hill**

“See Notting Hill” is a fun and entertaining walking tour of Notting Hill, London. See famous attractions from history, the world of music, art, film, celebrity all await for free although donations are welcome.

For more information and to book visit [www.seenottinghill.co.uk](http://www.seenottinghill.co.uk)

### **Ginstitute**

The Ginstitute offers a two-hour tour with so so many boozy cocktails, a history of the spirit with interactive rooms and then the chance to learn about botanicals and make your own gin.

**171 Portobello Road, London W11 2DY**

## RESTAURANT & BARS

Aside from our delicious food on our ground floor, there are several excellent restaurants we recommend:

### **The Summerhouse**

Our sister restaurant serves sophisticated seafood in an airy and light dining room with a terrace overlooking the Grand Union canal.

**Opposite 60 Blomfield Rd, Little Venice, London W9 2PA**

### **The Waterway**

Just a stone's throw from our sibling The Summerhouse, the Waterway is a stylish bar and restaurant in Maida Vale, West London. The menu is predominantly French and Modern European and focuses on delivering classic brasserie dishes. We also have a large, south-facing outdoor terrace that is open throughout the summer period.

On the terrace, we offer a light grill menu for an alfresco dining experience by the Grand Union Canal.

**54 Formosa Street, London W9 2JU**

### **Daylesford**

Daylesford is all about organic, seasonal and delicious food. Open for breakfast, brunch, lunch and supper, freshly prepared with the best ingredients in season from our organic farm in the Cotswolds.

**208-212 Westbourne Grove, London W11 2RH**

### **Farmacy**

Open for breakfast, lunch and dinner, Farmacy enables clean indulgence, inspired by dishes from around the globe and supports both a vegan and vegetarian diet, free from dairy, refined sugars, additives and chemicals.

**74-76 Westbourne Grove, London W2 5SH**

The Hayden rooms are fully equipped with fire prevention devices.

Fire extinguishers are located on all floors throughout the building.

There are fire extinguishers points located in the building, one on each floor.

For your additional safety, please familiarise yourself  
with the fire alarm call points & exit routes.

## EMERGENCY CONTACT DETAILS

### **Overnight Reception**

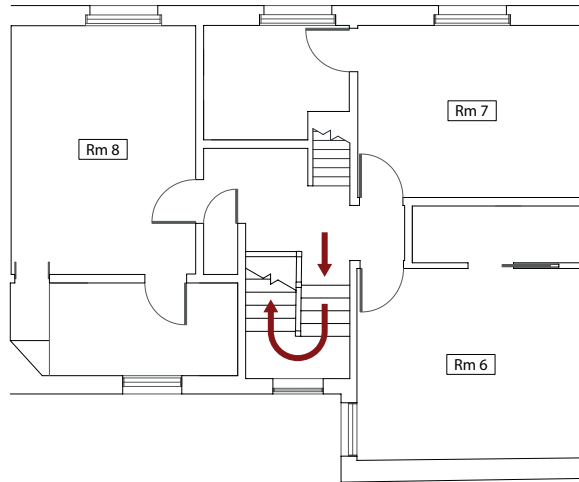
Between the hours of 11.30pm-9am if you have any queries or  
any emergency issues please call overnight receptionist on:

**07701-341-774**

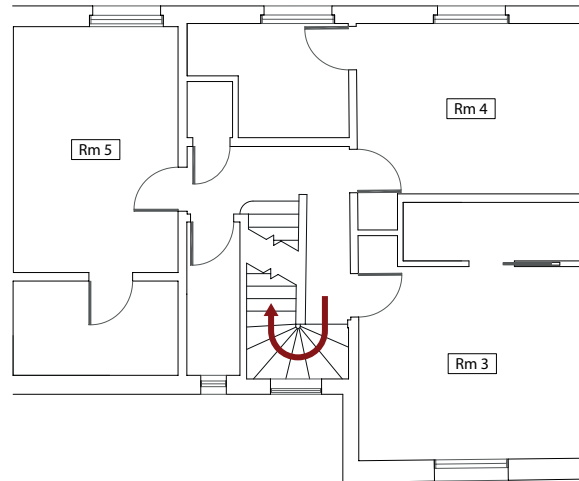
If at any point you are asked for a password  
please quote FARRINGTON

# FIRE ACTION NOTICE

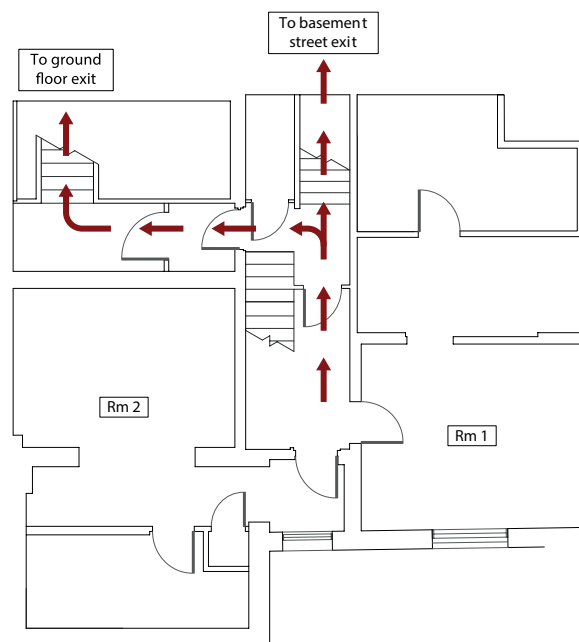
THIRD FLOOR



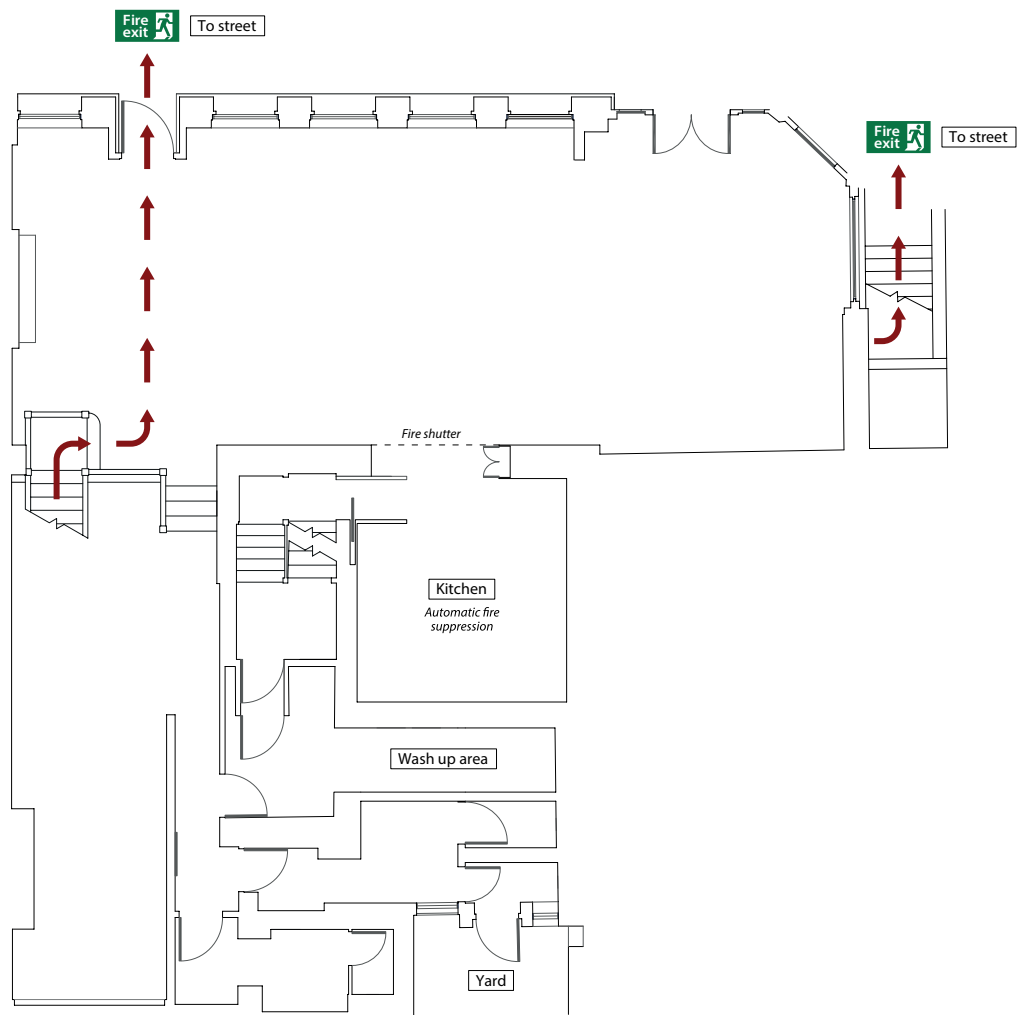
SECOND FLOOR



FIRST FLOOR



# GROUND FLOOR



## IF YOU DISCOVER, OR ACCIDENTALLY START A FIRE:

Leave the room immediately, ensuring that the door closes fully behind you.

Activate the nearest call point to sound the alarm (These are located on the landing)

## IF YOU HEAR THE FIRE ALARM:

Leave the room immediately

Report to a member of staff

Exit the building via the stairs to the Entrance door.

Go to assembly point on corner of Westbourne Grove and Kensington Garden Square outside Nando's.

If obvious signs of fire are observed, call 0207 627 0344 or 999

Do not re enter the building unless told to do so by an official.



## BAR & RESTAURANT

### Lunch & Dinner

Lunch & dinner are served on the ground floor in our gastro pub  
(see menu enclosed)

Monday - Tuesday: 17:00 - 23:00, Wednesday - Friday: 12:00 - 23:00,  
Saturday: 10:00 - 23:00, Sunday 10 - 22:00

A limited room service and drinks menu is available  
during lunch & dinner service. Please call the bar to place an order.

## BREAKFAST

We serve breakfast from 9:00am to 13:00pm  
on Saturdays and Sundays

List of our favourite places for breakfast nearby:

### Caffè Nero

Casual coffee shop chain with a menu of Italian-style  
dishes and specially blended drinks. Open from 6:00AM  
**113 Westbourne Grove, Bayswater, London W2 4UP**

### GAIL's Bakery

More than 30 types of bread and pastries are offered at this  
cosy local bakery serving coffee & breakfast from 7:00am.  
**12 Westbourne Grove, London W2 5RA**

### Farmacy

Seasonal vegan food served in a contemporary setting.  
Open for breakfast from 9:00AM  
**74 Westbourne Grove, Notting Hill W2 5SH**

## LOCAL AMENITIES & SERVICES

### **Dry Cleaning Service**

We have a local trusted dry cleaning service available for either next day service or within two hours (at an additional cost).

If you would like this service, please enquire at the bar.

### **Daily Laundry**

We'd like to minimise our environmental impact and ask our guests to try and re-use your towels during your stay. If you would like to have your towels replaced, please leave them on the floor or inside the bathtub. We will not change the towels that are hanging on the rail.

We have opted for toiletries containing natural ingredients & organic extracts which have been packaged in biodegradable or recyclable material.

### **ATM:**

ATM Cashpoint: 30-32 Westbourne Grove, London W2 5RW is within 0.1 miles 20 metres of The Hayden .

# IN-ROOM FACILITIES

## Safe

There is a safe available in each room.

Please follow the instructions in front of the safe door to operate.

You can activate the safe by entering a code. Before you check out, please make sure the door of the safe is unlocked & left open.

## Cooling

The air conditioning can be controlled from the panel on the wall next to the door.

## Heating

The heating temperature can be controlled using the thermostat on the side of the radiator.

## Internet TV & Movies

Our TVs are all connected to the internet to allow full use of Netflix, internet TV and freeview channels.

## WiFi

There is free WiFi throughout the bedrooms & pub.

To log in select "THE\_HAYDEN" & enter the password: cocktails

## Additional amenities

We also have the following additional amenities should you require them during your stay. Simply ask in the office or at the bar and we will bring these to your room:

Sewing kit - Nail file - Ear plugs - Shaving kit - Dental kit - Shoe shine



## FLYING HORSE COFFEE

HOME COMPOSTABLE CAPSULES

### Espresso Blend Morning Strength

Butterscotch Sweetness Paves The Way  
For A Delicious Chocolatey &  
Balanced Body

### Espresso Single Origin Afternoon Strength

Notes Of Big Cherry Sweetness, Easing Into A Floral  
& Rounded Finish

### Caffeine Free Mellow Molasses

Expect Notes Of Dark Chocolate,  
Molasses & Rye Bread

### **Outgoing phone call charges**

International 50p/min

Local Landline 50p/min

Local Mobile No. 50p/min

All calls will be charged at the time of check out & according to the duration. To dial out just dial the number & press the arrow on the right hand side of the phone that says 'dial'.

### **If you would like to take the following items home, here are our charges:**

Dressing Gowns £30

Hairdryer £20

Do not disturb sign £10

Room key £10

### **Policies**

We operate a strict non smoking & no pet policy throughout our rooms.

## **TRANSPORT**

### **Taxi Services**

Addison Lee 0207 387 8888

Taxis to the Hayden from Heathrow Airport cost approximately £50.00 and £92.50 from Gatwick airport. Please let us know if you would like us to book a taxi service for you.

### **Tube stations**

7 minute walk to Bayswater station (Circle & District lines)

8 minute walk to Royal Oak station (Hammersmith & City, Circle and Metropolitan line)

13 minute walk to Notting Hill Gate station (Central, Circle & District lines)

17 minute walk to Paddington station (Hammersmith & City, Bakerloo, District & Circle lines, as well as National Rail services)

### **Parking**

Qpark, 26 Queensway, London W2 3RX is 10 minutes away

### **Heathrow Express**

The Express Saver single fare is £25 if travelling during our peak times (06:30 – 09:30 or 16:00 – 19:00 Monday - Friday) or £22 if travelling during off-peak times. Returns are £37. Book in advance to save, with weekend advance tickets available from just £5.50 one way.